

## Stephen Heward

Stephen Heward's oil paintings are inspired by his recurring need for isolation and solitude – to be found in islands (the smaller the better), the sky or the desert, an empty beach or stretch of moorland. They celebrate the experience of landscape – in particular the atmospheric qualities of timeless and elemental wild places. They are often inspired by the edge of the land at the edge of daylight. Stephen was born in 1953. He has no formal training and has only recently begun exhibiting work. His loose and instinctive painting technique, somewhere between figuration and abstraction, is combined with a deep understanding of the landscape from a lifetime of close observation as landscape architect, pilot and painter.

His own pleasure in the work comes from the visual interplay of marks, colours and textures. He works quickly in the studio following a full and emotional physical experience of the landscape, which he feels might otherwise be diminished by the potentially messy and distracting paraphernalia of painting. Back in the studio, with time and distance from the experience, his memory (sometimes prompted by sketches, brief notes and photographs) has distilled into simple forms and colours which are transferred quickly to the canvas. Most of the work exhibited here is inspired by a recent trip to the Outer Hebrides. There are some inspired by the North Yorkshire Coast.

Stephen's work is in private collections in the UK and US. He has exhibited at: Rowley Contemporary Art, Winchester, the Biscuit Factory, Newcastle upon Tyne, Grays Court, York, the Affordable Art Fair, Battersea and the Great North Art Show, Ripon Cathedral.



"A Fine Afternoon on St Kilda"  
Oil on Board  
240mm x 180mm



"Rain Clouds on a Stiff Breeze"  
Oil on Board  
300mm x 240mm



“Low Tide, Wind Picking Up”  
Oil on Board  
300mm x 240mm



“Cleveland Way 2”  
Oil on Board  
240mm x 180mm



"Cleveland Way"  
Oil on Board  
240mm x 180mm



"Late Afternoon Saltwick Nab"  
Oil on Board  
240mm x 180mm



"Approaching Shower"  
Oil on Board  
300mm x 240mm



"Rain on the Wind"  
Oil on Board  
300mm x 240mm



"Fresh Atlantic Breeze"  
Oil on Board  
300mm x 240mm



"October Afternoon, South Uist"  
Oil on Board  
300mm x 240mm



“Potato Patch, Machair”  
Oil on Board  
300mm x 240mm



“Late Afternoon Sun, Uist”  
Oil on Board  
300mm x 240mm



“Towards Eriskay”  
Oil on Board  
300mm x 240mm



“Rain on the Way”  
Oil on Board  
300mm x 240mm



“Sandy Track, Machair”  
Oil on Board  
300mm x 240mm

### **Robert Newton**

“At the beginning of any painting, my first thoughts are not of the outcome, a complete work, but the sensation one experiences at first sight of the immediate landscape. My own source of experience, the undulating, variegated landscape of Northumberland; with its ever changing vista of tempestuous weather, streaming over from the Simonside and Cheviot Hills in the West, and out over the North Sea has, inevitably, become deeply rooted within my mindset. Therefore I have come to understand the complexities of its nature and interaction with my own senses. In order to transpose this sensation into a painting it has become essential to understand the life force of the landscape, its elements, beauty and primeval nature. Days and even weeks of sketching, failed paintings, countless drawings of observations that somehow seem irrelevant alone are now played out into a re-enactment of past experiences that eventually will become a complete body of work. Importantly, all one has to do is look, really look, not just with the eye, but dig deep into that subliminal human nature that one so often ignores in our time. Being fortunate to live in an area of our land that provides such an abundance of changing weather, land and seascape, all contributing to my experience of nature in its deepest and most sincere sense, I have come to understand my surroundings and somehow myself.”

Rob was born in Gateshead in 1964 and studied Fine Art at Sunderland University. He currently lives and works in Northumberland. He has exhibited widely including at: Tallantyre Gallery, Morpeth, Northumberland, the Biscuit Factory, Newcastle, Line Gallery, Scotland and Grays of Jesmond, Newcastle.



“South Westerly, Kildale”  
Oil on Canvas  
600mm x 500mm



“Reflections, Sandy Hole”  
Oil on Canvas  
450mm x 350mm



"Spring Sunlight"  
Oil on Canvas  
300mm x 240mm



"The Welfare Fields"  
Oil on Canvas  
400mm x 170mm



"Winter Light"  
Oil on Canvas  
500mm x 400mm



"Dean Moor"  
Oil on Canvas  
450mm x 300mm



"Water Hole"  
Oil on Canvas  
300mm x 240mm



"Flowing Water I"  
Oil on Canvas  
300mm x 240mm



“Cool Evening Light”  
Oil on Canvas  
300mm x 240mm



“Flowing Water II”  
Oil on Canvas  
300mm x 240mm



"The Whirlpool"  
Oil on Canvas  
300mm x 240mm



"A Sequence of Events"  
Oil on Canvas  
300mm x 240mm



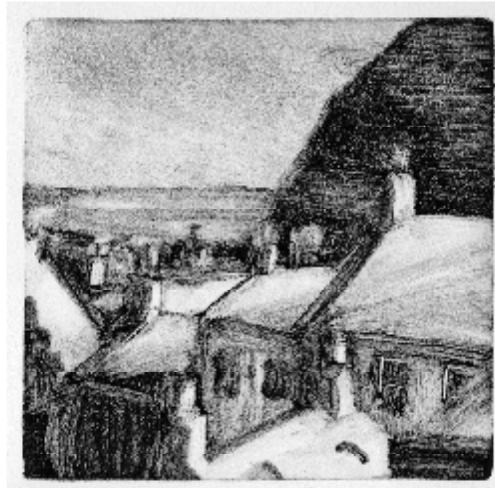
"Evening Light, Late May"  
Oil on Canvas  
400 mm x 170mm



"The Quarry"  
Oil on Canvas  
310mm x 310mm



"Alders, Approaching Darkness"  
Monotype Print  
300mm x 260mm



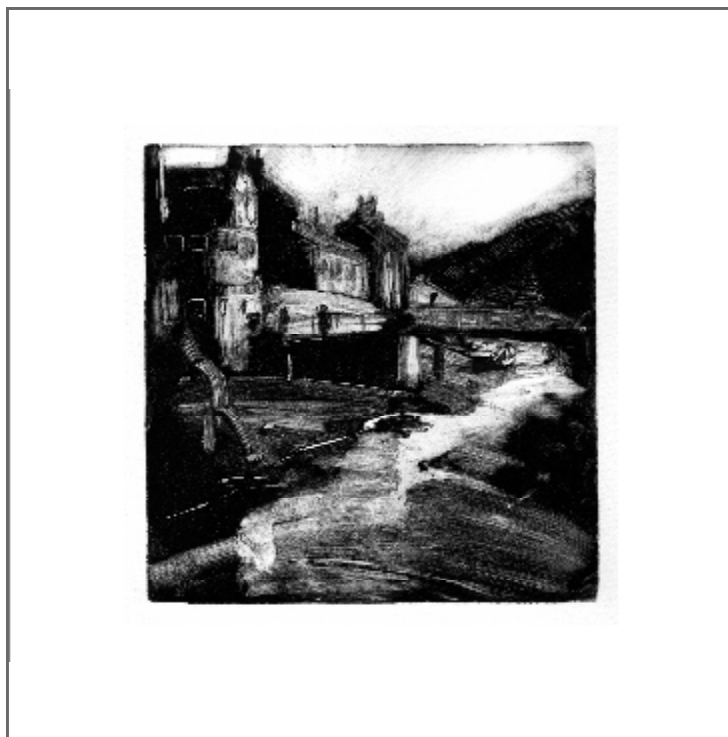
"Staithe I"  
Monotype Print  
170mm x 170mm



"Staites II"  
Monotype Print  
170mm x 170mm



"Staites III"  
Monotype Print  
170mm x 170mm



“Staites IV”  
Monotype Print  
170mm x 170mm