

Pamela Grace

An artist and printmaker living and working in Galloway, Pamela trained at the Scottish College of Textiles in Galashiels and started her career as a designer. Drawing remains central to her work - realized in pen and ink and watercolour, etchings and solar-plate etchings.

Pamela seeks out hidden micro-landscapes, glimpses of corners of gardens, allotments, and forgotten greenhouses. Sketches and larger colour drawings and paintings are often made on location and then developed in the studio, emboldening elements and using other techniques and processes to explore their potential.

As well as taking inspiration from the local countryside and gardens near the small Galloway village where she lives, Pamela particularly enjoys sketching and painting in allotments where the diversity of plots and planting plays against the haphazard geometry of huts, trellis and fencing to produce some intriguing images which reflect the hidden effort of the allotment gardeners. She regularly visits allotments at Inverleith in Edinburgh and the Lions Allotments in Berwick-upon-Tweed.

Often taking her drawing into printmaking, Pamela employs a range of specialist techniques using her own small printing press and also the nearby facilities of the Gracefield Print Studio where she has also been invited to tutor printmaking classes.



“Dahlias in the Walled Garden”
Watercolour, pen and ink
55cm x 70cm



“Allotment Poppies”
Watercolour, pen and ink
57cm x 74cm



"Mrs Booth's Garden"
Watercolour, pen and ink
65cm x 57cm



"Flowers on the Allotment"
Watercolour, pen and ink
55cm x 67cm



“Overview”
Watercolour, pen and ink
56cm x 69cm



“Huts, Herbs and Honeysuckle”
Watercolour, pen and ink
62cm x 52cm



"View of the Lions Allotment I"
Watercolour, pen and ink
70cm x 59cm



"View of the Lions Allotment II"
Watercolour, pen and ink
70cm x 59cm



“June Allotment”
Watercolour, pen and ink
53cm x 64cm



“Sylvia’s Plot”
Watercolour, pen and ink
61cm x 53cm



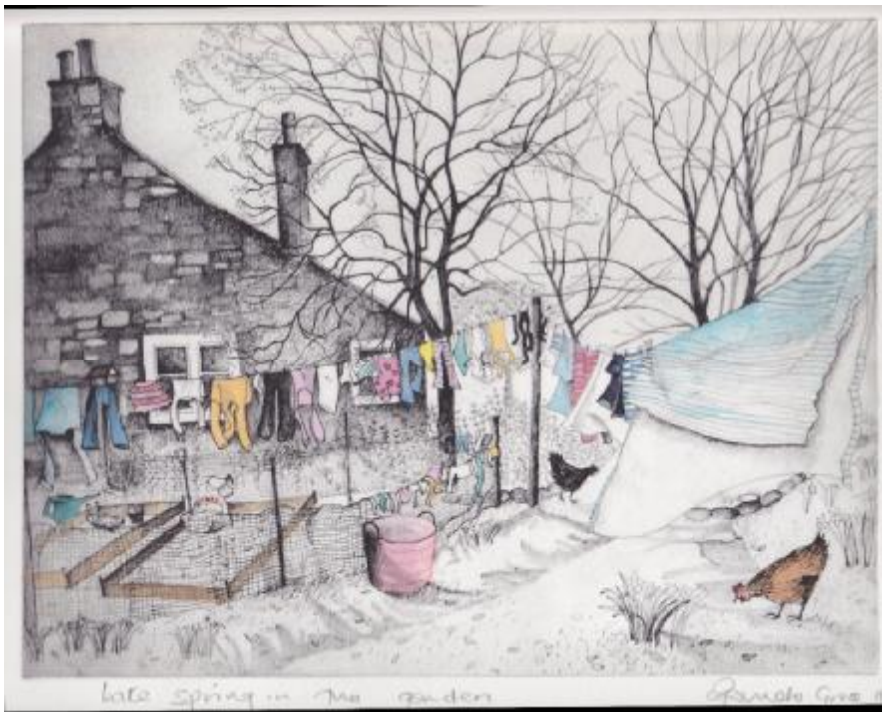
"Wheelbarrow and Buttercups"
Watercolour, pen and ink
48cm x 57cm



"Washing Line Dahlias"
Watercolour, pen and ink
56cm x 67cm



“Foxgloves Hut”
Watercolour, pen and ink
48cm x 56cm



“Late Spring in the Garden”
Hand coloured solar plate etching
38cm x 43cm



7140 Foxgloves in June from the series II

"Foxgloves in June"
Hand coloured solar plate etching
31cm x 28cm



"Early Morning on the Allotment"
Watercolour, pen and ink
54cm x 67cm

Sheila Smithson

"I love plants especially the contrasting shapes and patterns of foliage, the diversity of flower forms and the particular way in which they each grow.

My paintings have come about after masses of closely observed drawings, in this case mostly in a small garden. I see gardens as private places of retreat where we can indulge our senses. My work is unashamedly optimistic and decorative."

Sheila Smithson MA[RCA]



"Garden Creatures"
Acrylic on canvas
50cm x 40cm



“Autumn - Violas”
Acrylic on canvas
60cm x 60cm



“Winter”
Acrylic on canvas
60cm x 60cm



“Gate to the Wood”
Acrylic on canvas
60cm x 60cm



“A Fox Walked Out”
Acrylic on canvas
40cm x 50cm



“Cat in the Herbs”
Acrylic on canvas
40cm x 40cm



“Potting Shed”
Acrylic on canvas
40cm x 40cm



"May Evening"
Acrylic on canvas
40cm x 40cm



"Summer Window with Cat"
Acrylic on canvas
40cm x 40cm



“Evening Borrowdale - Pathway”
Acrylic on canvas
40cm x 40cm



“Blackbird”
Acrylic on wood
30cm x 30cm



"Cutting the Hedge"
Acrylic on wood
30cm x 30cm



"Stapha at the Gate"
Acrylic on wood
30cm x 30cm



"The Garden Puma"
Acrylic on wood
30cm x 30cm



"Summer Garden"
Acrylic on wood
20cm x 20cm



"Gladioli"
Acrylic on wood
20cm x 20cm



"Autumn Silhouettes"
Acrylic on wood
20cm x 20cm